

The Fossdyke was originally built, in around 120AD, by the Romans to connect the River Witham to the River Trent. This lock free journey takes you along the entire length of the historic waterway.



### Key Info

**Start:** Torksey Lock, Lincoln LN1 2EH  
**Finish:** Lucy Tower Car Park, Brayford Wharf North, Lincoln LN1 1XJ

This car park has a height restriction so you may need to find an alternative slightly further away.



Scan or visit [bit.ly/fossdyke-trail](http://bit.ly/fossdyke-trail) to find the map in Mapometer and download the GPX file

**Distance:** 11 miles  
**Time:** 2.5 - 5.5 hours  
**Locks/Portages:** 0  
**OS Map:** Explorer 271 Newark on Trent and 272 Lincoln

- ① This route starts off as it means to go on; through the open countryside of Lincolnshire.
- ② For the first 3 miles you will see open fields and only the odd house from the water.
- ③ At just over 3 miles you meet with the busy A57 road and track alongside it for the next few miles.
- ④ Pass under the railway at Saxilby around 5 miles in, continuing to follow the A57, on your right, as you leave the village. The Sheffield to Lincoln railway line now also follows your route, to your left.
- ⑤ Around 7 miles into your journey the A57 begins to move away from your trail and at 8 miles you pass the prestigious Burton Waters marina and housing development before heading back into open fields.
- ⑥ Passing under the A46 at 9 miles you will then see Carholme Golf Club on your left, before you suddenly enter the built up area of Lincoln City Centre.
- ⑦ You have just one mile of this more urban landscape before reaching your finish point at Brayford Wharf. You will be able to see Lincoln Cathedral and castle battlements as you enter the city.
- ⑧ As you enter the wharf you will see Lincoln University buildings on your right. Your get out is on a landing platform on the left side of the wharf, where there are a variety of restaurants.

### Find more canoe trails at:

[britishcanoeing.org.uk/go-canoeing](http://britishcanoeing.org.uk/go-canoeing)



**Winter Warmer:** The Royal William is very close to your finishing point on the waterfront. A relaxed pub serving full breakfasts, Sunday roasts and global pub classics.  
<http://www.royalwilliamlincoln.com/index>

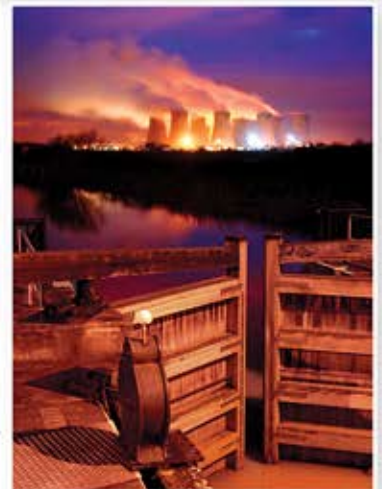
The Fosdyke Navigation was first built in Roman times, making it possibly the oldest British canal.

It was constructed in order to connect the River Witham to the River Trent in around 120AD. After the Romans left the Fosdyke fell into disrepair until 1121, when King Henry I ordered for it to be scoured out.

It often re-filled with silt until the mid 1700's, when a reliable channel was dug out and maintained. Since then the Fosdyke has always been in use although some parts fell into disrepair. Various groups and authorities have improved the navigation over the years and it is now a pleasant journey into the heart of Lincoln.

While in Lincoln it is worth visiting the historic centre. A stroll around its magnificent cathedral and cobbled, winding streets are a pleasant way to spend an afternoon.

[https://en.wikipedia.org/wiki/Foss\\_Dyke](https://en.wikipedia.org/wiki/Foss_Dyke)  
<https://www.visitlincoln.com/>  
<https://canalrivertrust.org.uk/enjoy-the-waterways/canal-and-river-network/fosdyke-navigation/>



## Safety and Licenses

*We want you to enjoy a safe trip, so here are a few tips for staying safe and paddling responsibly.*

### Paddle Safe:

Be prepared and take the right kit:

- Wear a correctly sized buoyancy aid
- Mobile phone – in a waterproof case
- Whistle – to attract attention in case of emergency
- Map and / or route description
- Appropriate clothing for the weather conditions + spares in a dry bag
- Food, drink & suncream!

### Paddle Responsibly:

Respect the natural environment and other users:

- Respect other waterway users #sharethespace
- Be environmentally aware, minimise your impact
- Ensure you have the correct licence if required
- Observe navigational rules – keep right and give other users space
- Check, Clean, Dry after every trip!

**#DontDrinkandDrown**

[www.rlss.org.uk](http://www.rlss.org.uk)

An important campaign by the RLSS encourages people to remember the effects of alcohol and the potential implications around water safety. 'Don't drink and drown' reminds people to be mindful of their alcohol consumption which is especially important for paddlers to remember too.

Visit our website  
[britishcanoeing.org.uk](http://britishcanoeing.org.uk)  
 for more information

**Licences:** The waterways in this trail are managed by the Canal & Rivers Trust and require paddlers to hold a license. British Canoeing membership includes a full annual license for this waterway - please take your membership card with you as this acts as your license. Non-members can either purchase a British Canoeing membership from [www.britishcanoeing.org.uk](http://www.britishcanoeing.org.uk) or buy licenses direct from [www.canalrivertrust.org.uk](http://www.canalrivertrust.org.uk)